

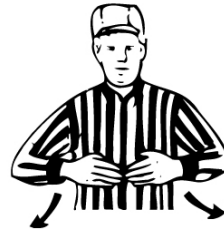
PROCEDURAL SIGNALS



TIMEOUT



GOAL



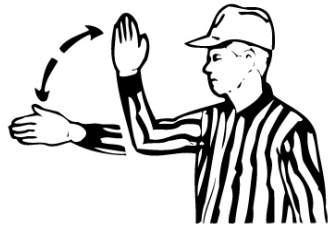
FACE-OFF



POSSESSION



NO GOAL



OUT OF BOUNDS
DIRECTION OF PLAY



LOOSE BALL



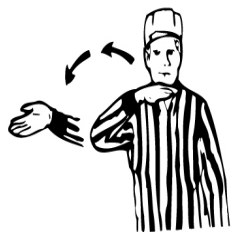
SIMULTANEOUS FOULS



FOUR SECOND COUNT



STALL WARNING



RE-ENTRY ON THE CREASE



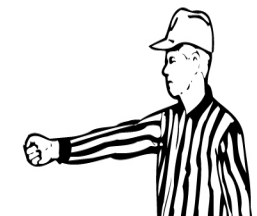
PLAY ON



BLOOD RULE



DISREGARD FLAG



INDADVERTENT WHISTLE

PERSONAL FOUL SIGNALS



1 MNUTE



ILLEGAL BODY CHECK



SLASHING



CROSS CHECK



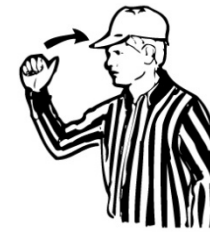
UNNECESSARY ROUGHNESS



UNSPORTSMANLIKE CONDUCT



TRIPPING



EXPULSION

TECHNICAL FOUL SIGNALS



TECHNICAL FOUL — 30 SECS



INTERFERENCE



ILLEGAL OFFENSIVE SCREENING
- ILLEGAL PICK



HOLDING



WARDING OFF



PUSHING



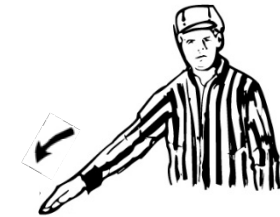
WITHHOLDING THE BALL



STALLING



OFFSIDE



CREASE VIOLATION



ILLEGALLY TOUCHING THE BALL



ILLEGAL PROCEDURE